

**218 Sheffield Avenue
Longmeadow, MA 01106**



DESCRIPTION

This "almost like new" house has been completely remodeled from top to bottom. New landscaping provides for a very attractive exterior appearance.

Kitchen area has all new appliances + granite countertops + ceramic tile backsplash, new fixtures, new stove, microwave oven and refrigerator. Ceramic tile floor provides a great accent vs. adjacent hardwood flooring.

Living room/ Dining Room/ Kitchen area has open floor plan for your comfort and enjoyment.

Refinished + new replacement hardwood floors throughout the house.

Master bathroom and 2nd full bathroom on first level have been completely remodeled.

Elegant front entrance with new glass double doors opening to stairway with new oak staircase and new chandelier lighting.

New wooden deck is a great addition to this house with direct access from sun/ family room.

New insulated vinyl windows. Gas forced air heating + central air conditioning.

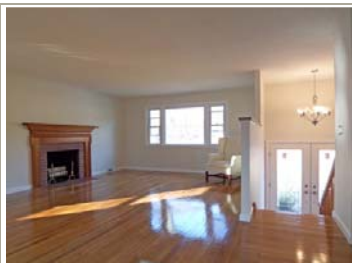
Located on quiet street and within walking distance to shops and restaurants.



Offered at \$369,000

7 room Raised Ranch
Completely remodeled + updated

3 bedrooms + 2½ baths
1500 sq ft of living space
+ finished basement with additional 700 sq. ft



Call owner at (860) 573-7908 for appointment or additional information.



www.LongmeadowBiz.com